

VEGAN *VERVE*

TEXT CHRISTY WRIGHT
PHOTOGRAPHY PHIL CROZIER



A Calgary new-build shows that vegan-friendly design can be colourful, luxurious and just plain fun.



THESE PAGES Artwork in the entryway, which is open to the living area, is enhanced by a whimsical console table and eye-catching fuchsia rabbit chairs. The structural steel beam informed the fireplace's finish. "We clad the top of it in cold-rolled steel, which also appears on the range hood in the adjacent kitchen," says designer Reena Sotropa. A grouping of coffee tables adds interest with mixed shapes and materials, while the large custom-designed rug and the furniture's foam and upholstery all meet vegan criteria.

ARCHITECTURE, Dawn Lavergne, MKL Studio. **DESIGN**, Reena Sotropa, Alanna Dunn, In House Design Group. **ART** (bird in the entry), Angelina Wrona. **CONSOLE**, Jonathan Adler. Bunny **CHAIRS**, 1st Dibs. Entry **RUG**, CB2. Zoe Pawlak living room **RUG**, Colin Campbell. Kelly Wearstler **LAMP**, Carrington Lighting. Custom marble-top **TABLE**, **SECTIONAL**, **SOFA**, Alanna Dunn, In House Design Group. Grey **TABLE**, Wayfair. Black **TABLE**, RH. **SIDE TABLE**, Domaine Fine Furnishings. **FIREPLACE TILE**, Tile and Stone Source. **TV**, Samsung. Black-framed **ART** (by front door), Elizabeth Ohlson. Oak-framed **ART** (two works behind black lamp), Edgar Plans.



F

urnishing a 10,000-square-foot custom home is a tall enough order. Throw in the directive that the owner wants to be completely surprised by the decor – all of which must be vegan – and, well, the design plot thickens. "It was easily the most exciting and nerve-racking thing a client has ever asked us!" says Reena Sotropa, who worked in tandem with Alanna Dunn.

The designers immersed themselves in fibre content

research (read: find alternatives to silk and wool) and set about making the new abode come alive. It had to feel inviting and contemporary while reflecting the owner, a young professional who craves colour, collects art and is committed to fitness (his home gym is off the charts!). By implementing a bevy of carefully sourced materials, perky hues and high-spirited artwork, the designers transformed the new-build into a high-impact and wholly vegan home.



“In a kitchen this size, the design becomes an exercise in restraint. *It’s very easy to overdo details in a large space* and much more difficult to be reserved with choices.” – Reena Sotropa





LEFT While the owner wanted to be surprised by the decor, he did have one request: yellow in the breakfast nook. The designers dialed up the sunny hue with a custom-made banquette upholstered in vegan-friendly cotton velvet. A tulip-base table works nicely with the built-in seating, and its marble top references the waterfall island. The oversized pendant light holds its own in the expansive layout and is a subtle nod to the stools' golden finish.

ART, Stacey Walyuchow. Custom **BANQUETTE**, Alanna Dunn, In House Design Group. **CUSHION FABRIC**, Threadcount. **CUSHION SEWING**, Kerstin Daly. **PENDANT, TABLE, RH. CHAIR**, CB2.



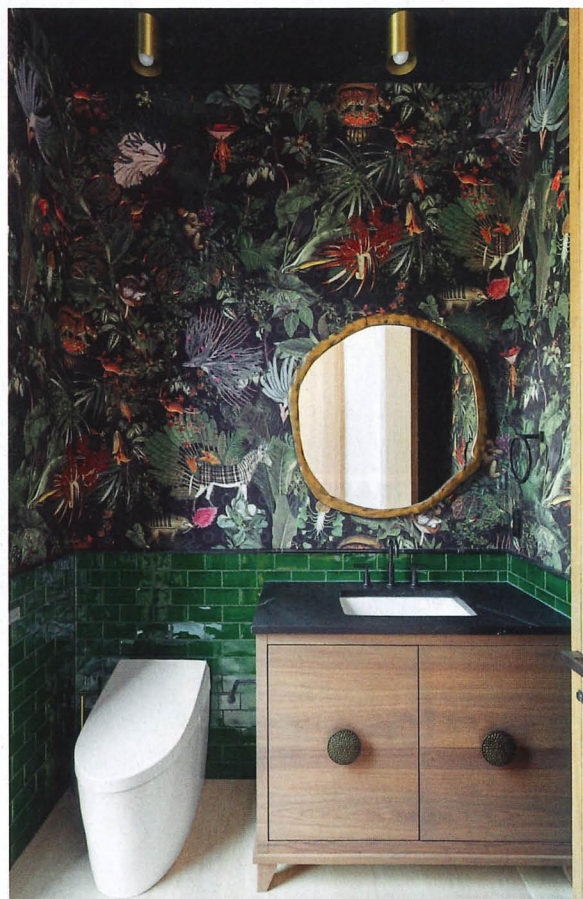
OPPOSITE "Walnut has an elegant yet contemporary feel that was a natural fit for the kitchen cabinetry," says designer Alanna Dunn. Integrated design keeps the fridge from becoming a focal point, and handsomely harbors small appliances and pantry items, as well as dishes. An eight-foot-long pendant light illuminates the 12-foot-long island, which is topped in natural quartzite and has an oversized sink with two faucets.

OPPOSITE, BOTTOM & RIGHT

The unexpected stools factor in fun. "Because everything else in the kitchen is restrained and pared back, we chose stools that layer in a bit more personality," says Reena. "The mix of sculptural shapes adds interest, and the simplicity of their form allows them to be imperfectly placed and still look great!"

COUNTERTOPS, Alberta Marble and Tile. **PENDANT**, Lightform. **STOOLS**, Anna Karlin. Sun Valley Bronze **HARDWARE**, Banbury Lane. The Galley **FAUCETS, SINK**, Royal Flush.

BELOW & RIGHT The designers tucked a butler's pantry behind the kitchen, a nice feature for the homeowner, who loves to entertain. They didn't scrimp on its finishes. "It's the same walnut as in the kitchen because even a hidden space should be a reflection of the rest of the home," says Alanna. White floor-to-ceiling cabinets define the mud room, and a cool, minimal-pivot door leads to the backyard.



"We took extra care in detailing how *the natural materials* in this home would interact with one another, creating expressive connections between materials." – Alanna Dunn



THIS PAGE & OPPOSITE, BOTTOM

The powder room delights with colour, pattern and whimsical wallpaper. “We designed the space around the wallpaper,” says Reena.

“It has a linen-like texture, so we added tiled wainscoting for a durable, cleanable surface.” Painting the ceiling black downplays its height and creates a cozy feel. The round mirror and elongated toilet are sculptural, and the low-hung art outside the powder room door intimates the visual interest inside.

Moooi Endangered Species **WALL-PAPER**, Metro Wallcoverings. **CEILING LIGHTS**, Cedar and Moss. **WALL TILES**, Saltillo Calgary. **TOILET**, Canyon Plumbing. Kohler **FAUCETS**, Royal Flush. Cabinetry **HARDWARE**, Banbury Lane. **MIRROR**, CB2. **ART**, Stacey Walyuchow.



While the hues are softer here, continuity is at play in the walnut details, right down to the integrated door pull that Reena designed.

BED, NIGHTSTANDS, RH. Kelly Wearstler **LAMPS,** Carrington Lighting. **ART** (on left), Christopher Klein. **ART** (on right), Matt Dangler. **SOFA,** Gresham House. **WALLCOVERING,** Phillip Jeffries. **ACCENT TABLE,** Domaine Fine Furnishings. **DRAPERY FABRIC,** Stroheim. **RUG,** Banner Carpets.



“We wanted the principal bedroom to be *restful and relaxing*. Its soft shades are an intentional departure from the home’s colourful living spaces.” – Reena Sotropa





A canopy-style bed anchors the airy space that's punctuated with shots of blue, including on the sofa and in the drapery's details. "It felt like a restful colour that would help create a relaxing refuge within the home," says Alanna. A plush rug serves as a soft foil to the walnut panelling. "One of our main challenges was that most rugs feature animal-based glue on the backings, but it's something that's easy to avoid just by asking. Almost all of our suppliers had access to vegan options available by order." The burnished gold stool echoes the gold of the owner's floor lamp.

Every wall in the primary bathroom is tiled, and this area features tiny elongated Thassos marble that adds interest. "I love the way the white marble reflects natural light around the space," says Reena. The art, which sits on a quartzite ledge, adds colour while the brass chandelier imparts a vintage feel. "Its crystals are actually quartz stones. Each one is different and we love that the fixture isn't a perfect shiny object, but rather like an organic art piece overhead."

WALL TILES, Daltile. **FLOOR TILES**, Porcelanosa. **CHANDELIER**, Currey and Company. Bain Ultra **TUB**, Fantini **TUB FILLER**, Royal Flush. Framed **ART**, LeRoy Jensen.





“The genesis of the principal bathroom’s design was the *stunning quartzite wall*. Its two perfectly book-matched slabs informed the symmetry of the vanities.” – Alanna Dunn



“We wanted the natural stone behind the vanity to be the real star of the show, so we chose to hang pendant lights rather than wall sconces,” says Reena. The expansive space feels seamless thanks to the oversized floor tiles that extend smoothly into the curbless shower. The built-in bench and the framing of the niche repeat the quartzite for continuity.

MIRRORS, RH. Lee Broom
PENDANT LIGHTS, Lightform.
Fantini **FAUCETS**, Royal Flush.
HARDWARE, Banbury Lane.
SOAP DISPENSERS, CB2.

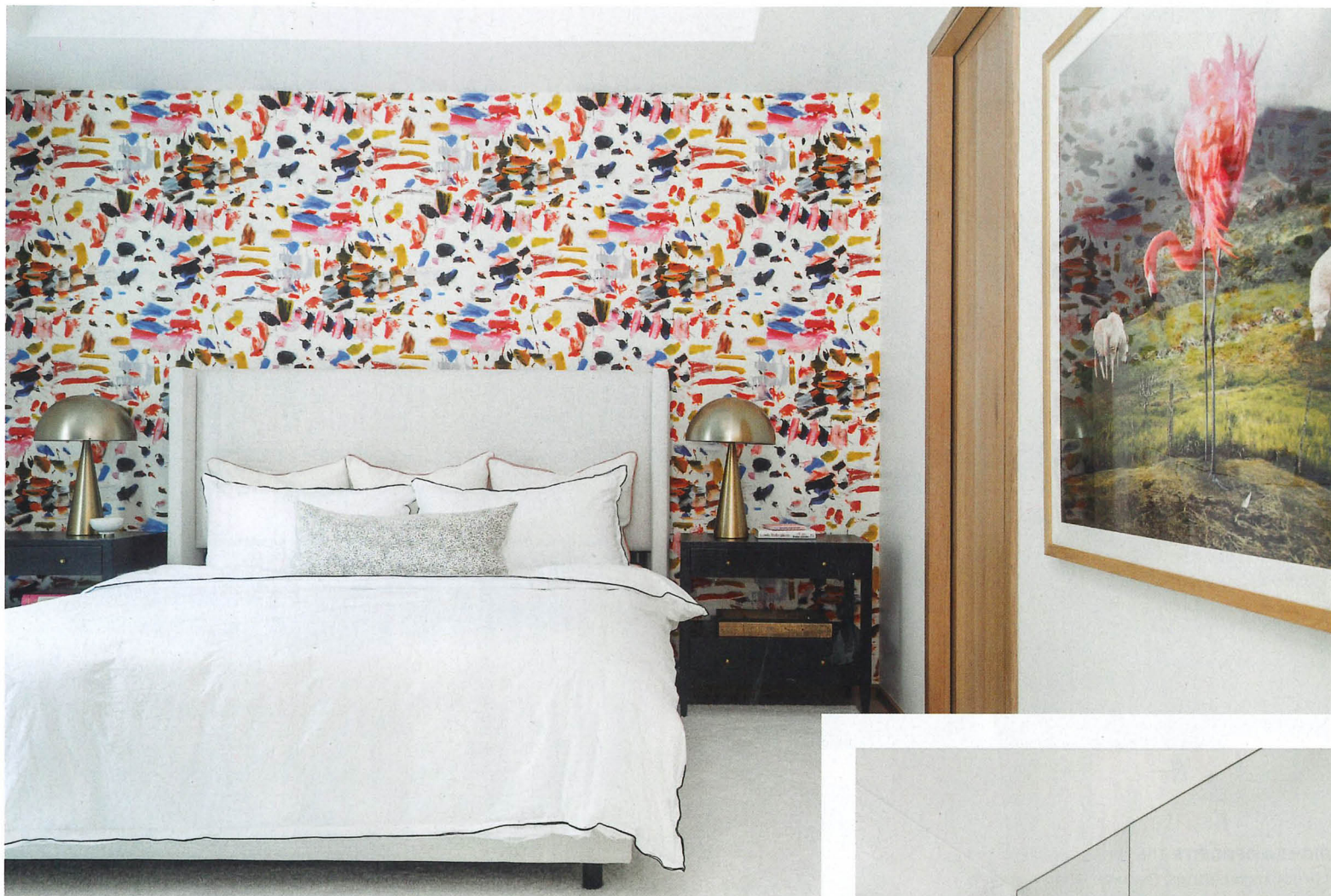


Wall-to-wall linen drapery radiates a quiet luxury and downplays the basement location of this guest bedroom, which is one of two in the home. The tonal space is brought to life with a mix of textures, including the softness of an oversized custom rug and the nubbi-ness of a linen headboard. "The sides of the headboard create a bit of coziness around the king-size bed," says Alanna.

NIGHTSTAND, LAMP, Pottery Barn. **BED FRAME,** Wayfair. **BEDDING, RH.** **RUG,** Prestige Mills.

"We deliberately designed the basement guest rooms to have *different personalities* and feel like boutique hotel suites." – Reena Sotropa





THIS PAGE This guest room (above) has a fresh, colourful presence thanks to its zingy wallpaper, which provides just the right amount of colour and texture to complement the pale walls and bedding. The room also features a built-in bar (left). “We used walnut millwork here and in the ensuite [right] to reflect the millwork on the main floor and in the principal bedroom,” says Alanna. “The brass warms things up, and this bathroom, with its penny-round floor, is a more traditional interpretation of the home’s aesthetic.”

WALLCOVERING, Pierre Frey. **BED FRAME**, Wayfair. **NIGHTSTANDS**, Domaine Fine Furnishings. **LAMPS**, CB2. **BEDDING**, RH. **RUG**, CDL Carpet and Floor Centre. **BAR WALL TILES**, Tierra Sol.



SHOWER FIXTURES, FAUCET, Royal Flush. **CABINETS**, HARDWARE, Emttek. **SCONCE**, Rejuvenation Lighting.



“The library was our *favourite space to design!*

It’s a reflection of the owner’s personal interests and colourful personality.” – Alanna Dunn

RIGHT & OPPOSITE The library, which boasts 15-foot-high ceilings, features white oak millwork with a custom-designed niche for the holographic piece of art. “We chose oak over walnut to keep the look lighter,” says Reena. “It provides the perfect bright background to the owner’s books and art, which may have been lost on a darker background.” Playful bunny-print drapery is hung at the same height as the ladder rail, and the striking blue rug is made of vegan-friendly Tencel. “It looks and acts so much like silk by bringing a shimmery, almost watery depth to the space,” says Reena.

CEILING LIGHT, RH. TABLE, ACCENT CHAIR, STOOL, Domaine Fine Furnishings. **RUG,** Banner Carpet. **Yellow CHAIR, SECTIONAL,** Alanna Dunn, In House Design Group. **ART,** Cecile Plaisance. **Frame TV,** Samsung. **Lee Jofa DRAPERY FABRIC,** Kravet. **FLOOR LAMP,** Wayfair.

ABOVE “The owner loves animals, especially ‘natural curiosity’ motifs, so we found this wallpaper for his library bathroom and designed the rest of the space to support it,” says Alanna. The blue vanity picks up on the octopus print, and tiled wainscotting adds easy-to-clean character. The round mirror fits in with the whimsical pattern and is a nice break from the straight lines below.

WALLPAPER, Spoon Flower. **MIRROR,** CB2. **TILES,** Julian Tile. **Kohler FAUCET,** Royal Flush.





RIGHT A striking mural by a local artist marks the entrance to the gym. Its colourful presence continues in the eye-popping fuchsia cabinetry, which houses a juice bar. “There is also an integrated fridge and dishwasher, as the owner often makes his morning smoothie here,” says Reena.

PAINTED MURAL, Katie Green. **WALL TILES**, Saltillo Calgary. Rubber **FLOORING**, Tarkett. **SECTIONAL**, Alanna Dunn, In House Design Group.



“While most home gyms are in the basement, this is on the third floor to offer the **most natural light** and stunning views of the downtown skyline.” – Reena Sotropa



Oversized flush-mount LED lights have a cool, industrial feel that’s perfect for a gym. The flooring is shock-absorbing rubber, and there is even a seating area with a TV. “The owner likes to host fitness sessions for his friends here, so we wanted to make it as comfortable and welcoming as possible.”



ABOVE & BELOW The gym's spa-like bathroom developed organically. "The fun monster-print wallpaper in the water closet was a late addition that we fell in love with after the rest of the bathroom had already been designed," says Alanna. "But the minimal and monochromatic backdrop worked perfectly with this bold and quirky print addition." An unused extension off the mechanical room is reimagined as a skate park.

WALL TILES, Stone Tile West. **FLOOR TILES,** Porcelanosa. **WALLPAPER,** Pierre Frey. **SHOWER FIXTURES,** Royal Flush.

